

VERA LIVING



TOWNSVILLE
Queensland

Not just a home, a lifestyle



Introducing Vera Living's brand-new one-bedroom villas near Townsville in Mundingburra, Aitkenvale, and Idalia.

Discover exceptional SDA with the option to bring your own supports.

[Watch the property video here](#)

Property highlights

These bright, spacious and modern villas combine stylish contemporary finishes with accessible design and assistive technology for enhanced independent living.



Spacious living with study & balcony

One generously sized bedroom with oversized ensuite. Complete with a separate villa for Onsite Overnight Assistance with a bedroom and bathroom.

State-of-the-art assistive tech

Assistive technology throughout controlled by an iPad, voice control provided, or any preferred device already owned by the participant. Plus automatic front door, tesla backup powerwall, and solar panels

Open-plan living

Spacious private living room, study and kitchen, complemented by fully adjustable kitchen bench with integrated induction cooktop, and high-end appliances, including washing machine, dryer, microwave, oven, cooktop, rangehood, dishwasher.

Communal & private outdoor space

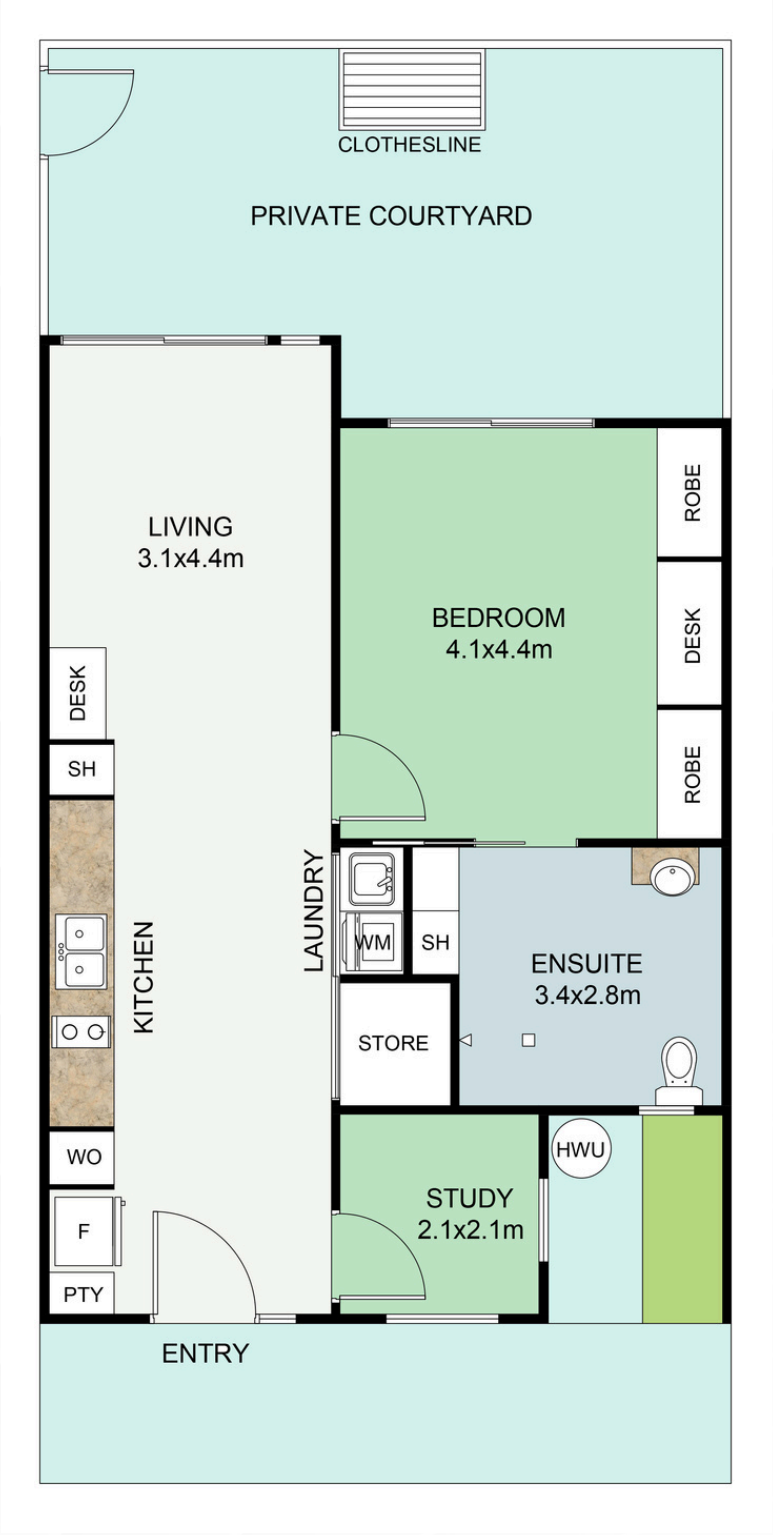
Enjoy being sociable in the shared outdoor space, or tranquility in your very own private courtyard.







Floor Plan



Location highlights

Enjoy scenic suburban living near the vibrancy of Townsville City, close to all you need for an enriched life.



Ample nearby amenities

Live close to all that makes life great. Enjoy being moments from shopping and dining options, beautiful parks, healthcare and leisure facilities.

Area of outstanding natural beauty

Scenic living sets the backdrop for an enriched laidback lifestyle. Immerse yourself in an abundance of natural beauty, enjoy some of the best natural delights in the world, with Townsville as the gateway to the Great Barrier Reef, Magnetic Island and the Wet Tropics World Heritage Area.

Well-connected

These suburbs are well-connected to the city, with multiple bus routes. Reach the CBD with a short 10mins drive, making for an easy commute.



*Not just a home,
a lifestyle*



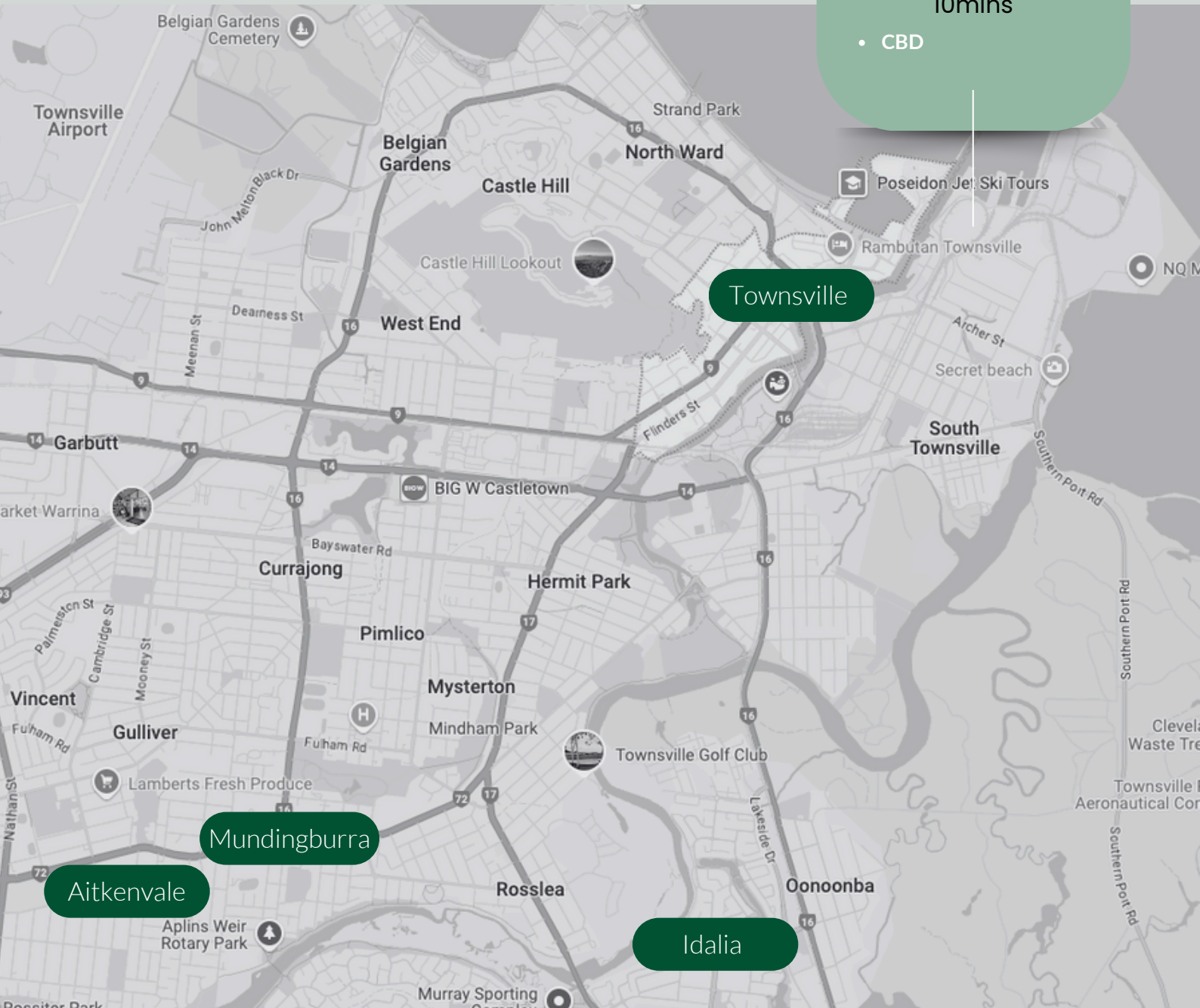
Location

5-10mins

- Bus
- Cafes & Restaurants
- Shops & Supermarkets
- Parks
- Hospital

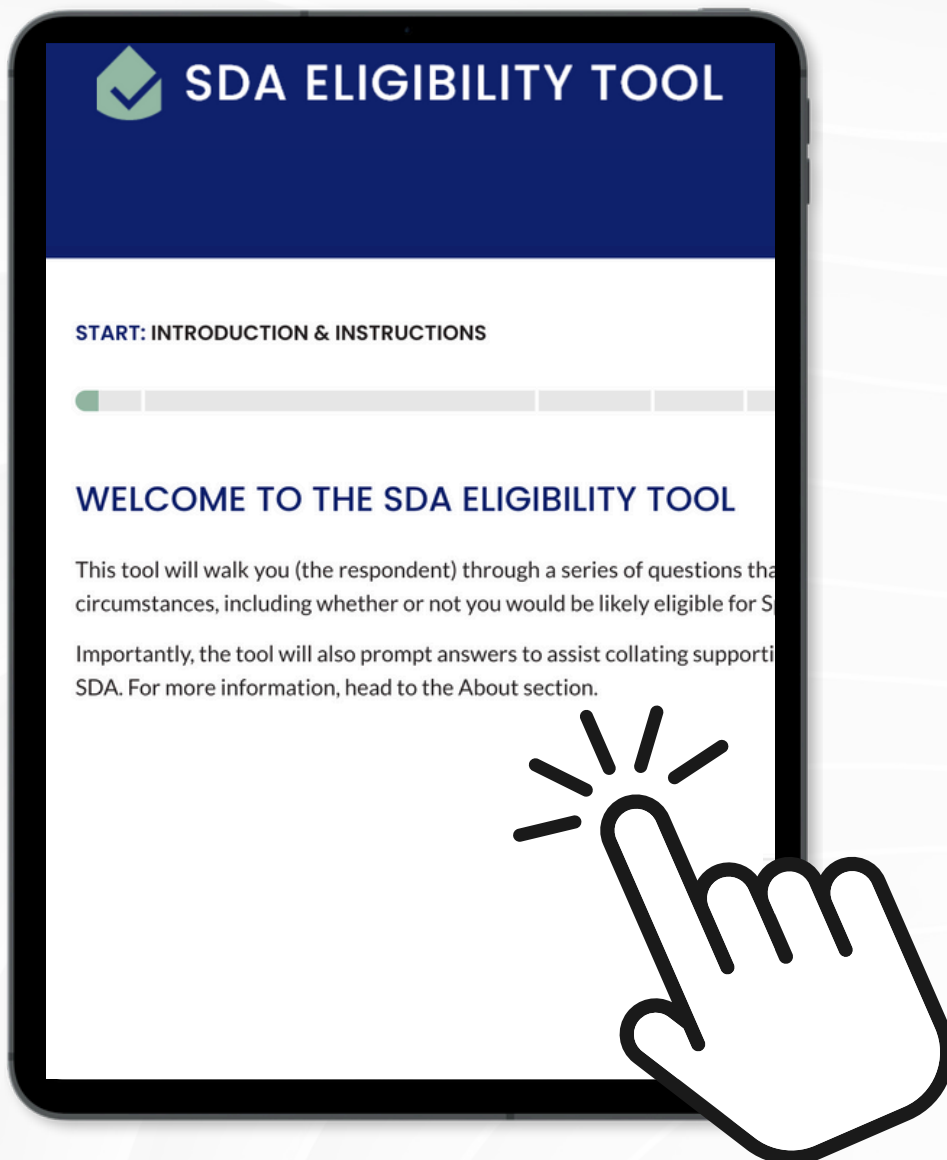
10mins

- CBD



Unsure if you're eligible for SDA?

Use our free online Eligibility Tool to get an accurate eligibility score



SDA ELIGIBILITY TOOL



Get in touch

Ask us how we can help with moving costs and a free rent period

Tania Ritter

Participant Engagement Specialist, QLD



0432 238 291



tania.ritter@veraliving.com.au

Join our vibrant community and
discover a world of belonging,
connection, and endless possibilities.

VERA
LIVING

www.veraliving.com.au