

# VERA LIVING



ROUSE HILL  
Sydney

---

*Not just a home, a lifestyle*



Introducing Vera Living's brand-new 1 & 2-bedroom apartments in the heart of Sydney's thriving north-west suburb, Rouse Hill.

Discover exceptional SDA in this well-connected sought-after location, with Onsite Overnight Assistance provided by Nextt.

**[Watch the property video here](#)**

---



# Property highlights

Bright and homely, these apartments offer laidback luxury in the heart of the town centre. Spacious open-plan living with beautiful interiors and finishes is complemented by assistive technology for enhanced independent living.



## Spacious living with study & balcony

One or two generously sized bedrooms with oversized ensuite, and guest bathroom in two bedroom apartments. Complete with built-in wardrobes and floor-to-ceiling height windows to maximise light. A spacious sun-kissed balcony perfect for outdoor entertaining. Located in the building is a separate apartment for a carer or Onsite Overnight Assistance.

## State-of-the-art assistive tech

Assistive technology throughout controlled by an iPad, voice control provided, or any preferred device already owned by the participant, plus automatic front door.

## Accessible open-plan kitchen

Complete with a fully adjustable electric kitchen bench with integrated induction cooktop and high-end appliances, including a washing machine, dryer, microwave, cooktop, rangehood, dishwasher and accessible side-opening oven with pull out resting drawer.

## Luxury communal amenities

Spacious, sun-kissed rooftop and immediate access to the vibrant town centre.

## Onsite Carparking

SDA compliant carparking available to residents. If carparking is required please enquire with Vera Living's Participant Engagement Specialist.



















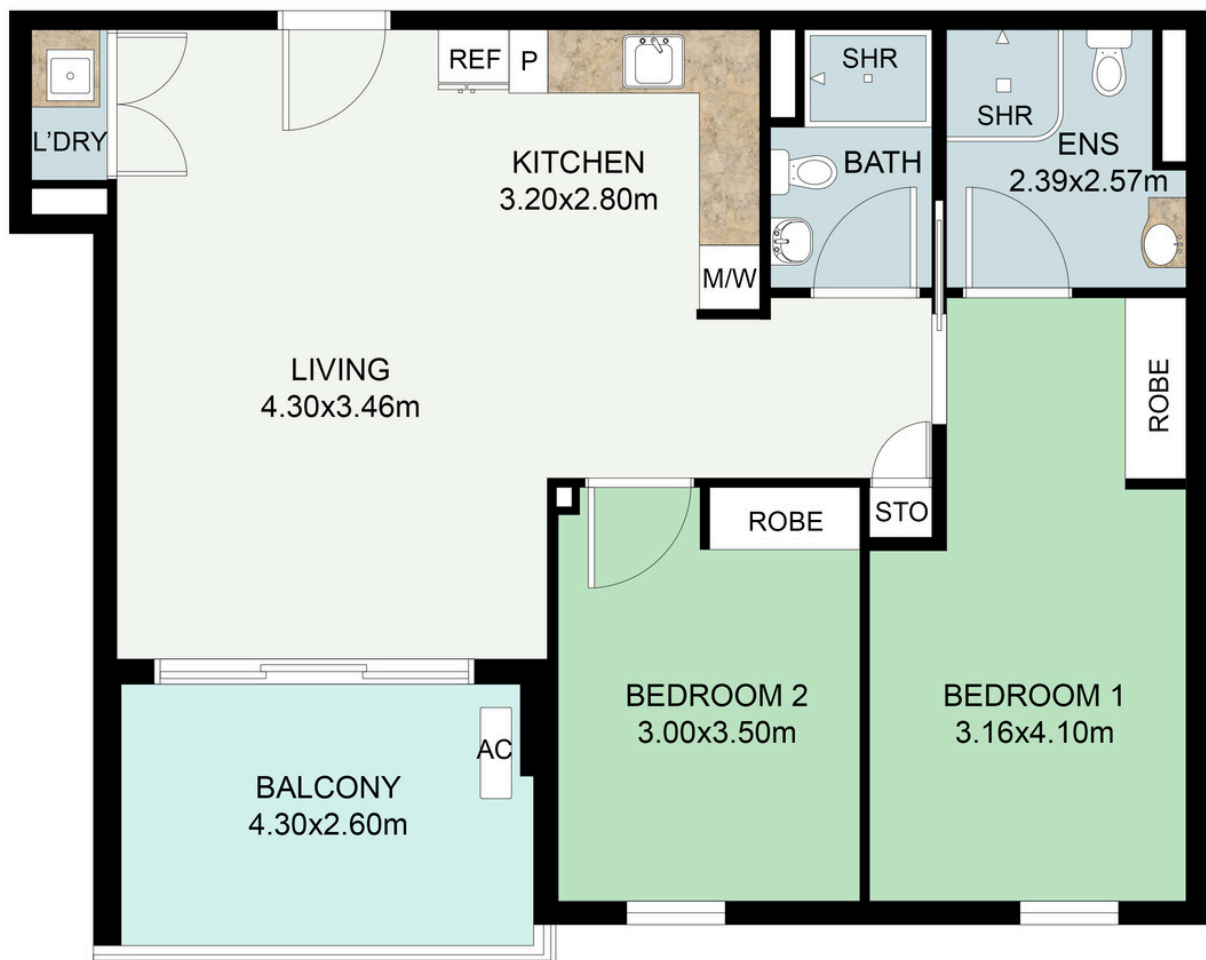






# Floor Plan

Two bedroom apartment



# Location highlights

Live in the heart of Rouse Hill town centre, the perfect setting for convenient, enriched living. This new epicentre of Sydney living is close to all that makes life great.



## Ample nearby amenities

Enjoy immediate access to the award-winning Rouse Hill Town Centre. Discover some of Sydney's best retail, boasting leading brands and supermarkets all on your doorstep. Be spoiled for choice of enjoyment with a plethora of restaurants, cafes and parklands.

## Endless local activities

Never be short of things to do. Beyond the usual entertainment options, as a resident, you can enjoy exclusive access to the neighbourhood's wonderful community facilities. The Community Pavilion has function rooms, multi-use courts, swimming pool and a gym. Plus, enjoy green spaces, a modern playground and a community garden.

## Well-connected to city and coast

The new Metro line has opened up a realm of easy access across Sydney's thriving north-west. Reach the CBD in just under an hour on the Metro, perfect for enjoying the vibrancy of the city or for an easy commute.





# Unbeatable connectivity

Multiple accessible transport options for enhanced independence.



**550m from  
Rouse Hill Metro**

**Reach the CBD in  
under an hour**





*Not just a home,  
a lifestyle*





## Location

5-10mins

- Rouse Hill Station
- Cafes & Restaurants
- Shops & Supermarkets
- Parks
- Healthcare

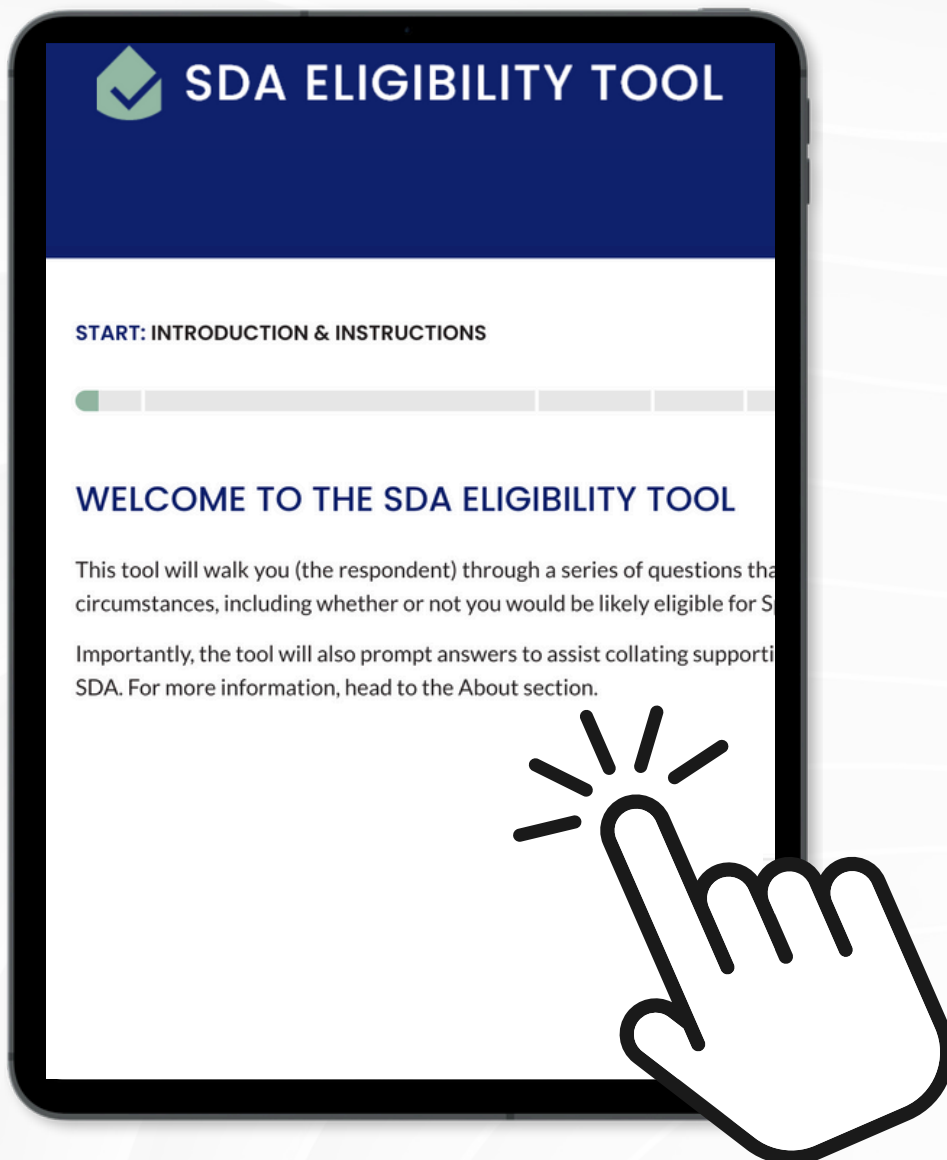
1 hour

- CBD



# Unsure if you're eligible for SDA?

Use our free online [Eligibility Tool](#) to get an accurate eligibility score



SDA ELIGIBILITY TOOL





# Get in touch

Ask us how we can help with moving costs and a free rent period

**Carrick Wilkie**

*Participant Engagement Specialist, NSW*



0422 247 163



[carrick.wilkie@veraliving.com.au](mailto:carrick.wilkie@veraliving.com.au)

Join our vibrant community and  
discover a world of belonging,  
connection, and endless possibilities.

VERA  
LIVING

[www.veraliving.com.au](http://www.veraliving.com.au)