

# VERA LIVING



**Eagleby**  
Logan

---

*Not just a home, a lifestyle*



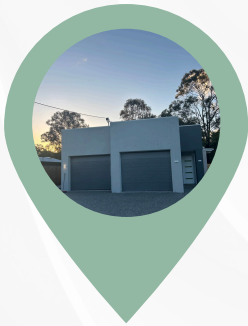
Introducing Vera Living's brand-new one-bedroom Robust SDA duplex in the peaceful Brisbane suburb, Eagleby.

Discover exceptional SDA in this vibrant, well-connected area.

Participants can bring their own supports. Please enquire to learn more about the properties.

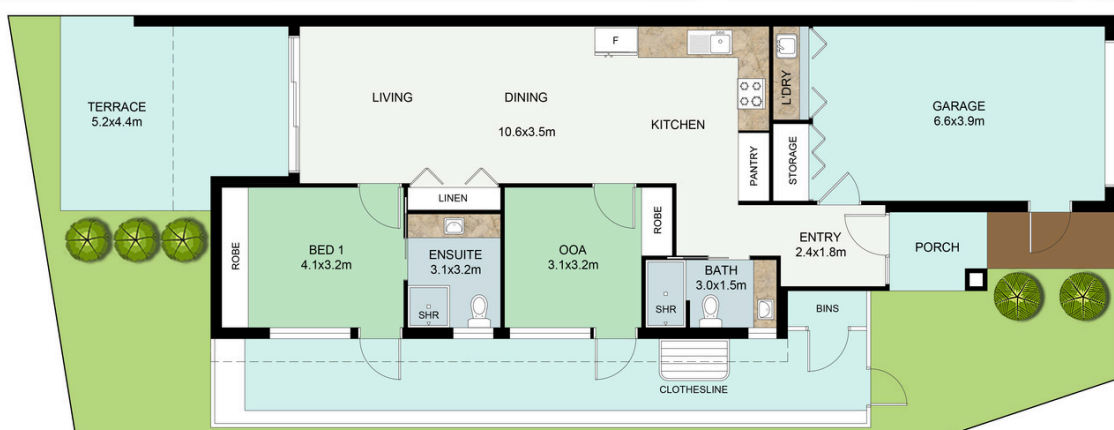
---

# Property highlights



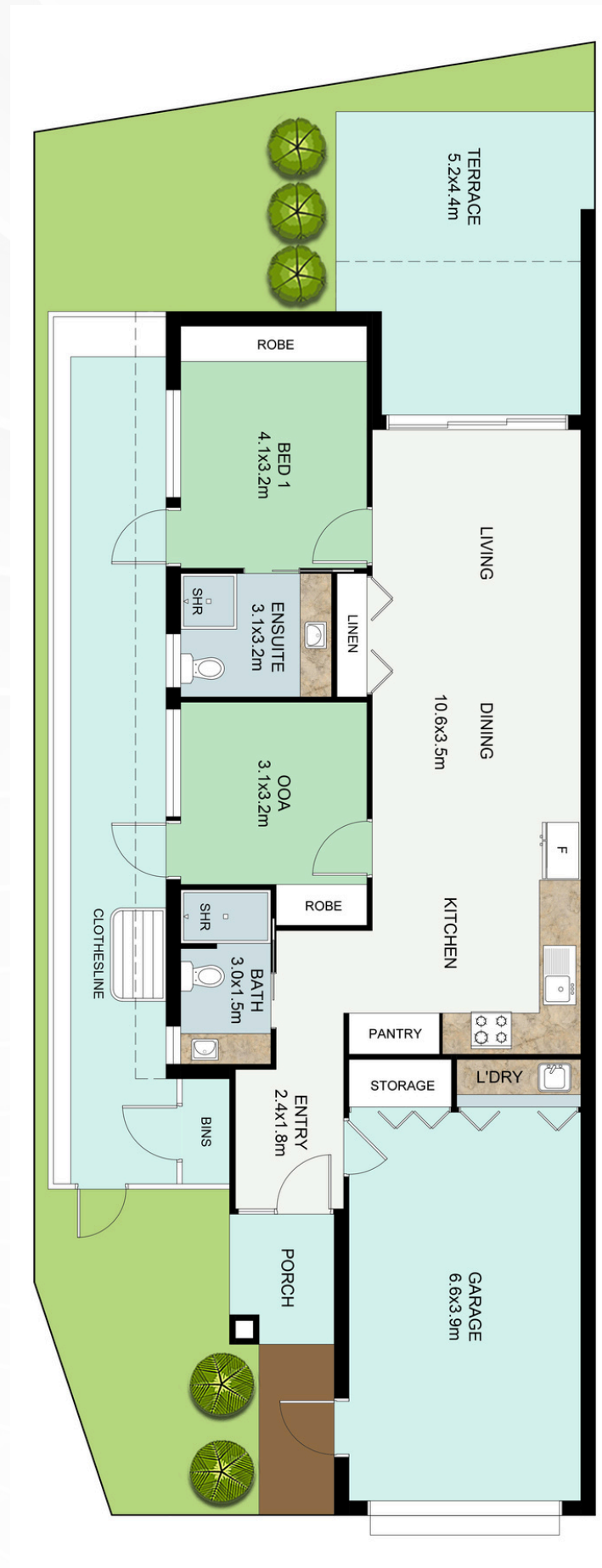
These bright one-bedroom, one-resident robust villas are both spacious and homely. Offering privacy and ample storage that meet the Robust design standards.

- One-bedroom with built in wardrobe and ensuite
- Open plan living, kitchen and dining area
- Second room for breakout or Onsite Overnight Assistance
- Guest bathroom
- Separate villa for Onsite Overnight Assistance
- Private courtyard
- Air conditioning
- Built in laundry with washing machine and dryer, plus linen cupboard and extra storage in the garage
- Dishwasher and rangehood provided
- One carpark and garage per two villas
- Hoist provisions up to 450kg if required in bedroom and ensuite
- Solar panels





# Property Floor Plan



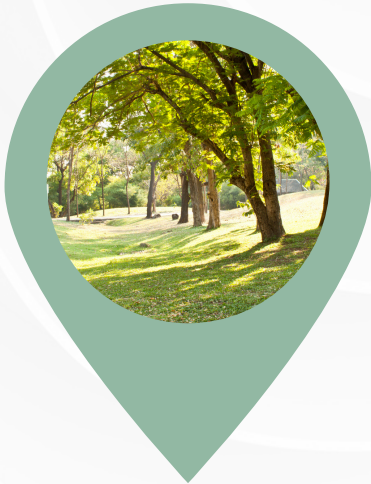






# Location highlights

Eagleby is bordered by the Logan and Albert Rivers, 32km south-east of Brisbane CBD. This blooming community is filled with parklands, convenient amenity and community facilities.



## Recreational delights

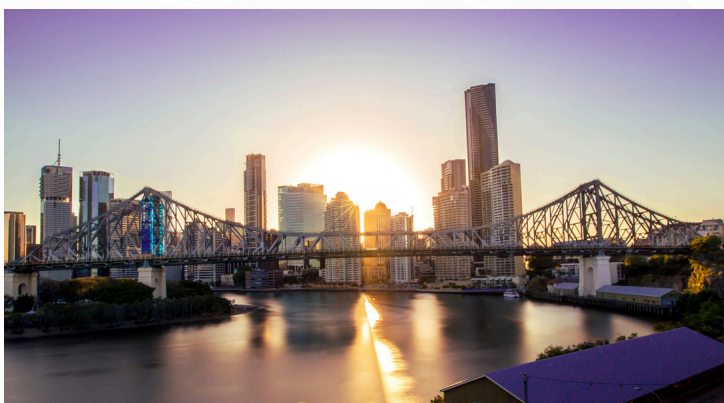
Eaglyby boasts a variety of parks, wetlands, and recreational facilities, perfect for outdoor activities and leisure. Enjoy an abundance of relaxation options with local parks, playgrounds, and BBQ areas.

## Local amenity

Enjoy close proximity to all you need, with shopping, dining and healthcare just moments away.

## Well-connected

Primely located, Eaglyby offers convenient access to urban amenities while boasting a peaceful suburban lifestyle. With multiple bus routes, Logan Central is only 20mins away, and 30mins to Brisbane.



## Location

### 5 mins

- Eagleby Shopping Plaza
- Parks & Recreation
- Bus routes

### 10 mins

- Beenleigh Marketplace
- Bars & Dining

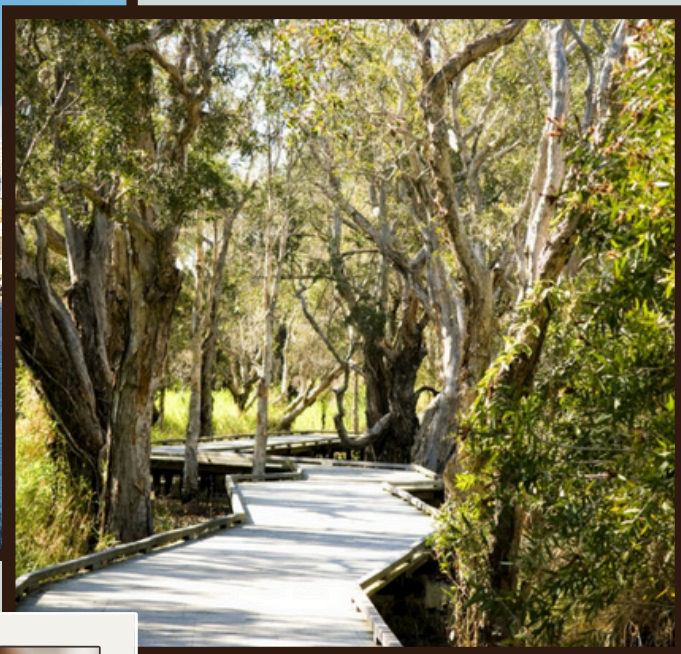
### 30 mins

- CBD



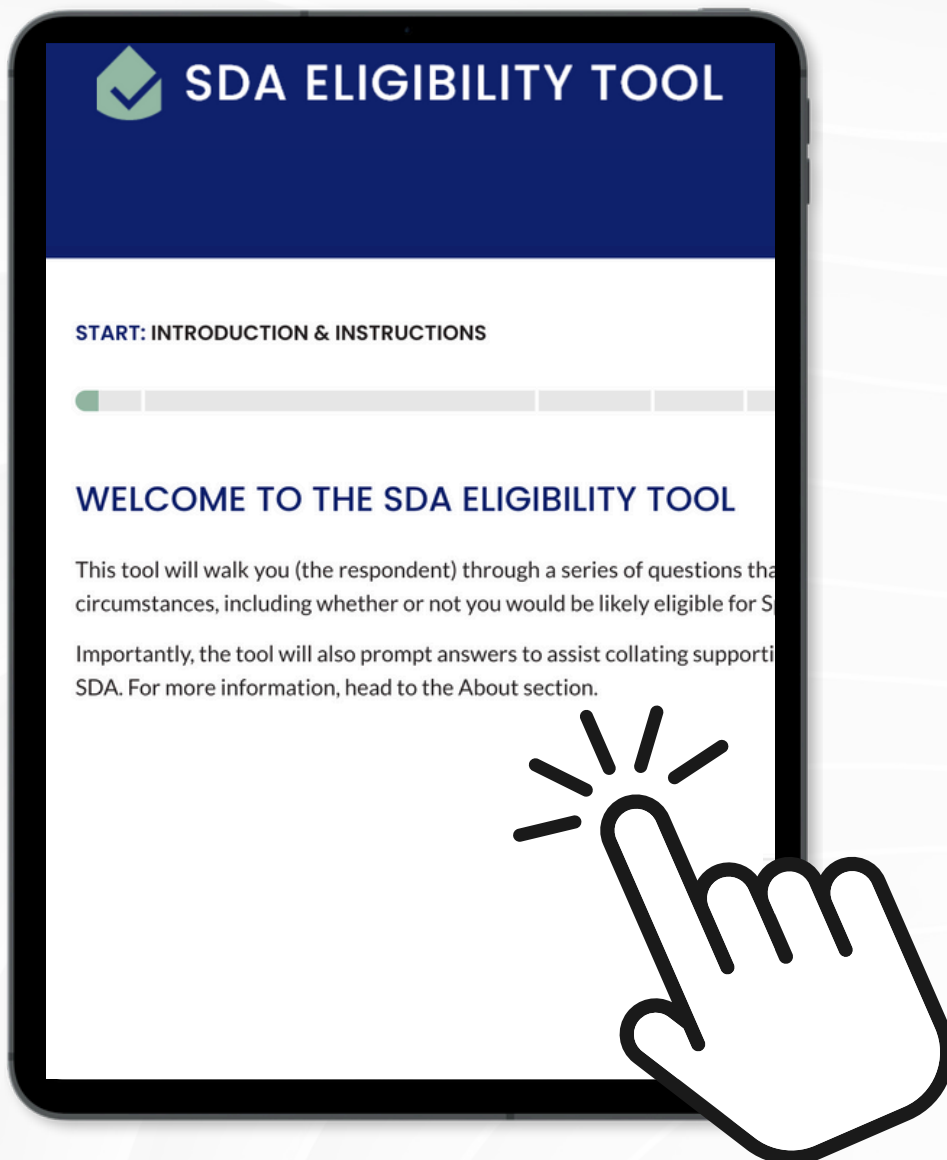


*Not just a home,  
a lifestyle*



# Unsure if you're eligible for SDA?

Use our free online [Eligibility Tool](#) to get an accurate eligibility score



SDA ELIGIBILITY TOOL






# Get in touch

Tania Ritter

*Participant Engagement Specialist, QLD*



 0432 238 291

 [tania.ritter@veraliving.com.au](mailto:tania.ritter@veraliving.com.au)



Join our vibrant community and  
discover a world of belonging,  
connection, and endless possibilities.

VERA  
LIVING

[www.veraliving.com.au](http://www.veraliving.com.au)